



CATALOG

PRODUCT 23





Our mission is to elevate strength training. With more than 30 years of experience in this field, Harbinger leads the strength training category in gloves, belts and accessories. Strategic design and high-quality materials make Harbinger the trusted strength training brand of choice for all performance levels.

HARBINGER

Gloves	7 - 19
Belts	20 - 27
Grips Assistance Wrist & Knee Support	28 - 36
Training Accessories	37 - 38
Home Fitness	39 - 40
While Stock Last	41 - 47

BRAND SUPPORT

Campaign	48 - 49
Digital	50
Retail Looks	51 - 52
Social Connection & Press	52

OVER 30 YEARS OF EXPERIENCE

Founded in 1988 by fitness enthusiast and entrepreneur David McCrane, Harbinger swiftly became the brand of choice for weight lifters worldwide.

It began with an innovative Wrist-Stabilizing Glove. Originally intended to mitigate wrist injuries for skateboarders, McCrane quickly realized the benefit of the Wrist-Stabilizing glove for the strength training industry. Teaming up with 8-time Mr. Olympia bodybuilder Lee Haney, they pioneered Harbinger as the source for high quality, carefully engineered gloves and belts.

Since then, Harbinger has expanded into strength training accessories, including wraps, straps and bar grips. With proprietary technology and advanced design, Harbinger drives the category and continues to deliver new, innovative products.

In 2013, Harbinger introduced functional fitness products, including weight vests and speed ropes, designed to enhance fast-paced workouts.

Today, Harbinger Fitness is part of Implus LLC organization which has more than 30 years of experience. The Implus Fitness & Wellness Division manages category-leading brands renowned for superior quality, innovative design and heritage. Implus proudly distributes in over 75,000 retail outlets across North America and in over 70 countries worldwide. Implus' scale and reach helps make Harbinger products broadly available across the United States and internationally.



1988

Harbinger founded with Wrist-Stabilizing glove as first product

1990

First belt launched, the Lee Haney Kevlar Weight Training Belt

1993

Millionth glove sold

1998

Patented Wash & Dry leather technology

2002

Women's line launched

2013

Introduced functional fitness products

2015

Acquired by Implus LLC

NOW

New 2.0 gloves ranges



FITNESS

Versatile, all-purpose gloves and accessories collection combines strength and cardio options for consumers with well-rounded general fitness goals. Fitness shoppers typically want to improve appearance, get in shape, and have more energy for daily life.



LIFTING

Rugged and durable, the Lifting collection provides a broad range of best-selling gloves, belts, straps, wraps and training aids for weightlifting. Lifting shoppers typically have training goals of building strength and muscle size, and often strength train as their primary form of physical activity.



HEAVY LIFTING

Our toughest and most supportive gloves, belts and accessories, the Heavy Lifting collection provides substantial support for serious training. Heavy Lifting shoppers typically have competitive training goals to set PRs, max out and advance in weight classes. Often, Heavy Lifting shoppers compete at the amateur or semi-pro level, and strongly identify with lifting weights as a lifestyle.





GLOVE SIZE CHART

Measure the circumference of your flat hand just under the knuckles (not including your thumb). **Our gloves should fit tight.** The real leather is designed to stretch over the life of the glove. If you are in-between sizes, we recommend you select the larger of the two sizes. If you prefer a looser fitting glove, buy one size larger than you typically wear.

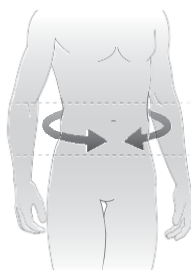


HARBINGER GLOVES

	XS	S	M	L	XL	XXL
Unisex/ Mens	6.5" - 7" ~16.5cm - 17.8cm	7" - 7.5" ~17.8cm - 19cm	7.5" - 8" ~19cm - 20.3cm	8" - 8.5" ~20.3cm - 21.6cm	8.5" - 9.5" ~21.6cm - 24cm	9.5" + + 24cm
Womens (Old pro & power)	6" - 6.5" ~15.2cm - 16.5cm	6.5" - 7" ~16.5cm - 17.8cm	7" - 7.5" ~17.8cm - 19cm	7.5" - 8" ~19cm - 20.3cm	-	-

BELT SIZE CHART

When purchasing a new strength training belt, it is important to measure yourself correctly. **Do not use your pant size to determine the size of your belt.** Use a tape measure around your waist, between your hips and ribs. Circle around the waist so you start and stop on belly button. **Our strength training belts are designed to be worn tight around one's waist.** The more secure the belt, the more support and stabilization it provides. If you prefer a looser fit, buy one size larger.

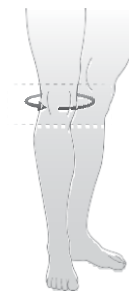


HARBINGER BELTS

	XS	S	M	L	XL
Unisex/ Mens	-	25" - 29" (63cm - 74cm)	30" - 34" (76cm - 86cm)	34" - 38" (86cm - 97cm)	38" - 44" (97cm - 112cm)
Womens	24" - 28" (61cm - 71cm)	28" - 32" (71cm - 81cm)	32" - 36" (81cm - 91cm)	-	-

KNEE SLEEVES SIZE CHART

Measure the circumference of your knee at the center of your patella (knee cap).



	S	M	L	XL
UNISEX	12" - 14" 30.5cm - 35.6cm	13" - 15" 33cm - 38cm	14" - 17" 33.5cm - 43.2cm	16"+ 40.6cm+

LIFTING GRIPS SIZE CHART

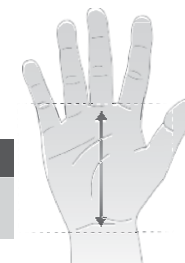
Measure the circumference of your flat hand just under the knuckles (not including your thumb).



	S/M	M/L	L/XL
UNISEX	7" - 8" 17.8cm - 20.3cm	7.5" - 8.5" 19cm - 21.6cm	8" - 9.5" 20.3cm - 24cm

PALM GRIPS SIZE CHART

Measure the length of your palm from the bottom of your middle finger to your wrist.



	S	M	L	XL
UNISEX	3.25" - 4" 8.3cm - 10.1cm	4" - 4.75" 10.1cm - 12cm	4.75" - 5.5" 12cm - 14cm	5.5"+ 14cm+



ANTIMICROBIAL

Treatment used to control odor and prevent staining caused by natural and environmental bacteria

APPEARS ON: SHIELD PROTECT



SPIDER GRIP

Premium leather that undergoes a special tanning process to produce a tackier hand

APPEARS ON: LIFT ASSIST



TECH GEL™

Proprietary gel that cushions key stress points for extra support

APPEARS ON: ALL TRAINING GLOVES & TRAINING WRISTWRAPS



VENTED PALM

Vents between key stress points for enhanced breathability

APPEARS ON: ALL PRO & PRO WRISTWRAP GLOVES



BIOFORM

Clay at palm and fingers that softens and molds as the body warms up for maximum padding, comfort, and control

APPEARS ON: LIFT ASSIST



WASH & DRY

Machine washable and dryable leather

APPEARS ON: WOMEN FLEXFIT / WOMEN PRO /SHIELD PROTECT/ ALL 2.0 RANGE



TRANSITION STYLE

Previous best-seller styles kept in range to help rotate to the new 2.0. Previous styles with this icons will be available for one more year before stopping.

HARBINGER GLOVES

Grip. Support. Protect.





FINGERLESS GLOVES – Our full line of “fingerless” gloves with varying degrees of breathability, padding and wrist support

Style	Power	Flexfit	Pro	Training Grip	Pro Wristwrap	Training Grip Wristwrap
Comparison	Entry Level	Minimalist, breathable	More comfort and range of motion	More padded for heavy lifting	Built in Wrist Support	Wrist Support + More padding

2.0



PREVIOUS STYLE



New color



FULL FINGER GLOVES – Designed for full finger protection and a complete hand coverage

Style	Men’s Shield Protect Gloves	Women’s Shield Protect Gloves
Comparison	Minimal and Flexible	Minimal and Flexible





NEW 2.0 - POWER GLOVES

MINIMAL PADDING, REAL BAR FEEL

Entry-level glove, suitable for those looking to add minimal grip support while lifting



FEATURES:

- Padded genuine leather palm provides firm grip with reinforced high-touch areas
- Comfortable, lightweight and breathable
- Finger and wrist pull tabs for easy on and off
- Updated thumb padding placement in high stress area
- Adjustable fit with hook and loop wrist enclosure



RATING	
Support	////
Padding	////
Breathability	////
Flexibility	////
FITNESS	



Black

Code	Size
22257	S
22258	M
22259	L
22260	XL

Green

Code	Size
22261	S
22262	M
22263	L
22264	XL

Aqua

Code	Size
22235	XS
22236	S
22237	M

Pink

Code	Size
21934	XS
21935	S
21936	M



PREVIOUS POWER GLOVES

MINIMAL PADDING, REAL BAR FEEL

The Power Collection is the right choice for those new to strength training or seeking minimal padding for the closest feel of the bar. With an all leather, open cell foam cushioned palm, Powergloves deliver Harbinger's quality and durability at a remarkable value.



BLACK



WOMEN'S

Code	Size
21499	S
21500	M
21511	L

WOMEN'S

- StretchBack mesh for breathability and flexible fit
- Double layered thumb for extra protection
- Padded palm for enhanced comfort and firm grip
- Fully adjustable wrist closure and pull tab

Code	Size
21502	S
21503	M
21504	L



BLACK / BLUE



BLACK / MERLOT

WOMEN'S

Code	Size
21805	S
21806	M
21807	L





NEW 2.0 - FLEXFIT GLOVES 2.0

FLEXIBLE, BREATHABLE, LAYERED PROTECTION

Natural, minimalist glove for palm protection and uncompromised movement during workouts



FEATURES:

- Natural, minimalist glove for palm protection and uncompromised movement during workouts
- Naturally contours to your hand from 7-piece genuine leather palm
- Enhanced breathability with back of hand mesh panel and perforated palm
- Elastic wrist cuff provides more flexibility without compromising stability
- Comfortable and lightweight fabric for unrestricted range of motion
- Designed for easy on and off with integrated finger and wrist pull tabs

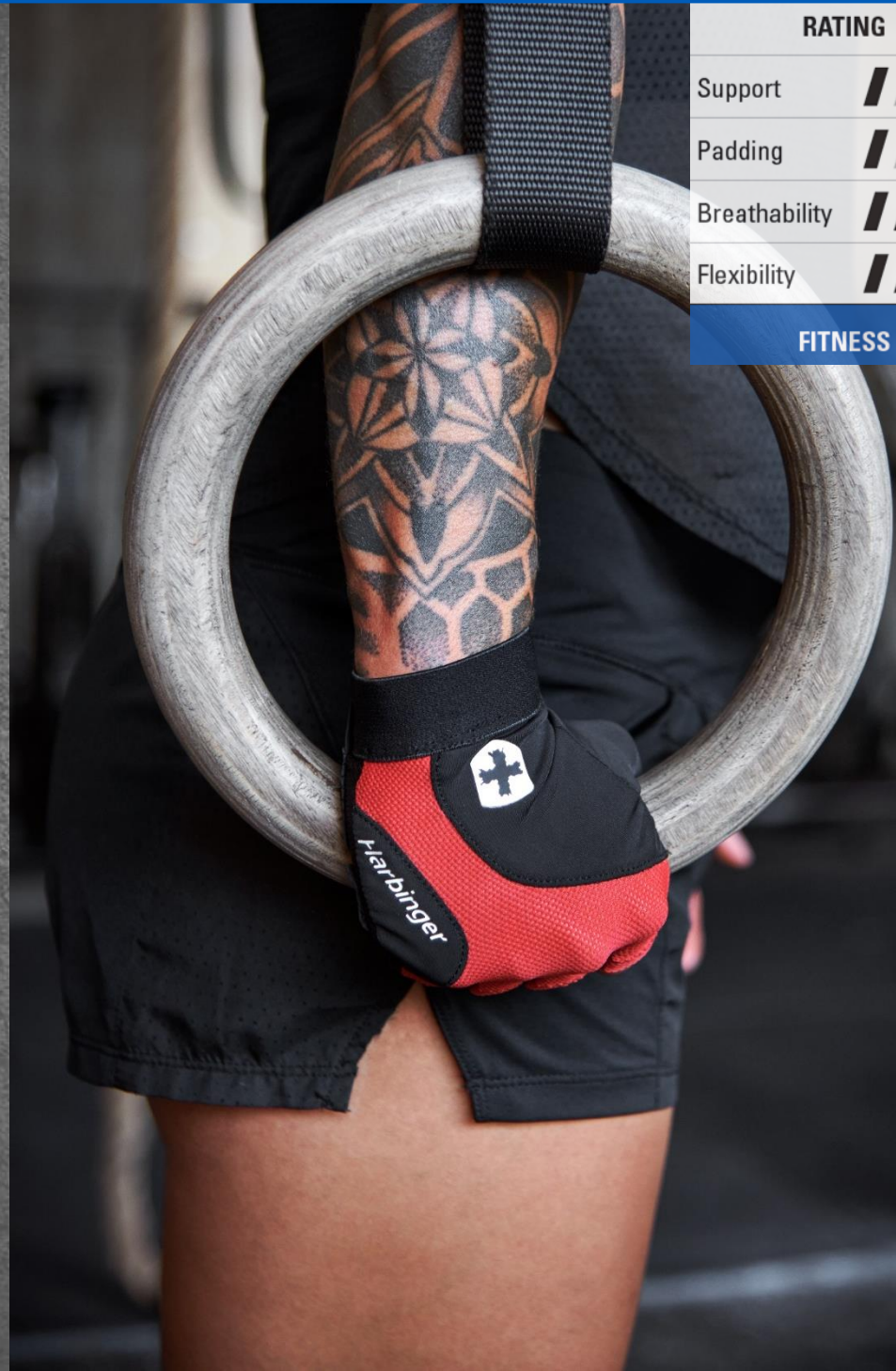


Red

Code	Size
22265	S
22266	M
22267	L
22268	XL

Black

Code	Size
22436	S
22437	M
22438	L
22439	XL



RATING	
Support	////
Padding	////
Breathability	////
Flexibility	////
FITNESS	



SHIELD PROTECT GLOVES

The Shield Protect Full-Finger Fitness Gloves provide complete hand coverage with a micro suede palm. The touchscreen friendly fingertips offer convenience during workouts. A close contact grip from an unpadded palm and fingers provides a true feeling while lifting and exercising for more efficient training.



BLACK / GREY



MEN'S NON-WRISTWRAP



Code	Size
22138	S
22139	M
22140	L
22141	XL

- Full-finger touchscreen friendly fitness gloves with micro suede palm
- Unpadded palm and fingers for a close contact grip with reinforced zones on high touch areas
- Incredibly lightweight design protects hands without the bulk
- 10. Ultra-breathable construction for maximum comfort
- Secure fit with hook and loop wrist enclosure
- Machine washable with anti-microbial treatment to help control odor



GREY / SKY

WOMEN'S NON-WRISTWRAP



Code	Size
22142	S
22143	M
22144	L





NEW 2.0 - PRO GLOVES

RUGGED CONSTRUCTION, ESSENTIAL PADDING

Lightweight and flexible gloves with enhanced breathability for moderate lifting support



FEATURES

- Supports firm grip with a padded genuine leather palm
- Enhanced breathability with perforated 2-piece palm
- Comfortable 4-way stretch fabric on back of hand for full range of motion
- Designed for easy on and off with integrated finger and wrist pull tabs
- Secure fit with adjustable hook and loop wrist fastener



Black



Code	Size
22249	S
22250	M
22251	L
22252	XL



Tan



Code	Size
22253	S
22254	M
22255	L
22256	XL



RATING

Support	////
Padding	////
Breathability	////
Flexibility	////

LIFTING



PREVIOUS PRO GLOVES

RUGGED CONSTRUCTION, ESSENTIAL PADDING

Best selling Pro Collection offers signature Harbinger quality at a competitive price.



BLACK / TEAL
NEW COLOR



WOMEN'S

- Top of hand performance vented stretch panels
- Machine wash and dry / separate colors

Code	Size
22238	S
22239	M
22240	L



BLACK / PINK



WOMEN'S

- Top of hand performance vented stretch panels
- Machine wash and dry / separate colors

Code	Size
361491	S
361507	M
361514	L



NEW 2.0 – TRAINING GRIP

ENHANCED PROTECTION AND PADDED SUPPORT



Heavy lifting glove for those looking for more palm protection

FEATURES

- Maximum hand protection provided by TechGel padded palm
- Multi-piece palm designed to allow natural hand movement
- Comfortable 4-way stretch fabric on back of hand for full range of motion
- Designed for easy on and off with integrated finger and wrist pull tabs
- Secure fit with hook and loop wrist fastener



Black

Code	Size
22269	S
22270	M
22271	L
22272	XL

Blue

Code	Size
22273	S
22274	M
22275	L
22276	XL



RATING

Support	////
Padding	////
Breathability	////
Flexibility	////

LIFTING



NEW 2.0 – PRO WRISTWRAP

Lifting gloves for those who want flexibility and breathability but need maximum wrist stability

FEATURES

- Integrated wrist wraps for added support and stability during lifts and other movements
- Supports firm grip with a padded genuine leather palm
- Enhanced breathability with perforated 2-piece palm
- Comfortable 4-way stretch fabric on back of hand for full range of motion
- Designed for easy removal with integrated finger pull tabs
- Secure fit with adjustable hook and loop wrist fastener



RATING	
Support	////
Padding	///
Breathability	////
Flexibility	////

HEAVY LIFTING



Black

Code	Size
22277	S
22278	M
22279	L
22280	XL



Tan

Code	Size
22287	S
22288	M
22289	L
22290	XL



NEW 2.0 – TRAINING GRIP WRISTWRAP

Heavy lifting glove for those looking for more palm protection

FEATURES

- Integrated wrist wrap for added support and stability during lifts and other movements
- Maximum hand protection provided by TechGel padded palm
- Multi-piece palm designed to allow natural hand movement
- Comfortable 4-way stretch fabric on back of hand for full range of motion
- Designed for easy removal with integrated finger pull tabs
- Secure fit with hook and loop wrist fastener



Black

Code	Size
22291	S
22292	M
22293	L
22294	XL

Blue

Code	Size
22295	S
22296	M
22297	L
22298	XL



RATING

Support	////
Padding	////
Breathability	///
Flexibility	///

HEAVY LIFTING



HARBINGER BELTS

Support. Stability. Power.



FABRIC BELTS – Fabric or “hook and loop” belts provide support while still offering flexibility and a quick tension adjustment to relax between sets.

Style	4" Nylon Belt	5" Foam Core Belt	4.5" Foam Core Belt	4.5" Hexcore Belt	7.5" Firmfit Contour Belt
Comparison	Most flex, least support	Versatile, balance of support and flexibility	All the conform of the 5" in an International Weight lighting standard	More supportive + breathable mesh	7.5" back for ultimate support



LEATHER BELTS – Leather belts are more supportive but less flexible and are great for heavy lifts

Style	4" Padded Leather Belt	6" Padded Leather Belt
Comparison	4" back for more dynamic movements	6" back : more support, great for squats



DIP BELTS – Dip belts add weight to bodyweight movements like pullups or dips.

Style	Polypro Dip Belt
Comparison	Dip & pull up movements





NYLON BELTS

Harbinger's synthetic strength training belts are made of flexible, lightweight materials for just the right amount of core support. This best-selling lineup features abrasion-resistant nylon for durability and heavy gauge steel tensioning buckles for an adjustable fit.



4" NYLON

- 4" durable nylon web construction flexes for comfort
- Extra wide 3" strap stabilizes core muscles
- Heavy gauge steel buckle tensions easily for a custom fit

Code	Size
360470	S
360890	M
360906	L
360913	XL



BLACK



4" NYLON

- 4" wide belt with 3" support strap
- Flexible nylon web core

Code	Size
22174	XS
22175	S
22176	M



MERLOT



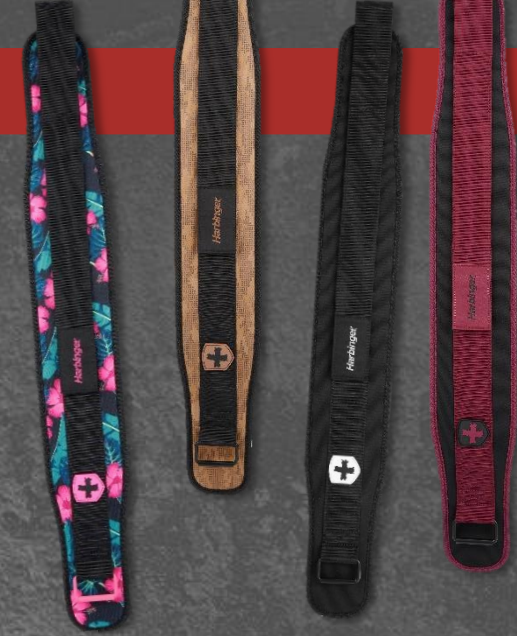


FOAM CORE BELTS

Foam core belts are designed with a lightweight foam that brings comfort and flexible support while exercising. The wide strap stabilizes core muscles as the heavy gauge steel buckle allows easy custom fit.

FEATURES

- A versatile, low-profile belt for moderate lifting and functional movements
- The 4.5" Foam Core Belt helps stabilize core muscles and supports lower back during lifting
- 4.5" belt stabilizes core muscles and supports lower back during lifting
- Designed with premium hook and loop fastener for a stronger hold and no snagging
- Low profile steel roller buckle won't interfere with lifts
- Meets IWF competition standards



Merlot

Code	Size
22458	S
22459	M
22460	L
22461	XL



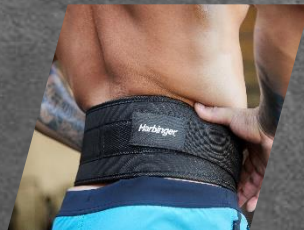
Floral

Code	Size
22466	S
22467	M
22468	L
22469	XL



Black

Code	Size
22241	S
22242	M
22243	L
22244	XL



Tan

Code	Size
22245	S
22246	M
22247	L
22248	XL



Blue

Code	Size
22462	S
22463	M
22464	L
22465	XL



Woodland Camo

Code	Size
22470	S
22471	M
22472	L
22473	XL





HEXCORE BELTS

Harbinger's synthetic strength training belts are made of flexible, lightweight materials for just the right amount of core support. This best-selling lineup features abrasion-resistant nylon for durability and heavy gauge steel tensioning buckles for an adjustable fit.

4,5" HEXCORE MESH

Code	Size
22153	S
22154	M
22155	L
22156	XL



BLACK / RED

- 4.5" foam belt stabilizes core muscles and supports the lower back during lifting.
- Ventilated construction allows for maximum airflow and breathability.
- Designed with premium hook and loop fastener for a stronger hold and no snagging.
- Heavy gauge steel roller buckle makes tensioning easy for a customized fit.
- Belt width meets most competition size requirements.

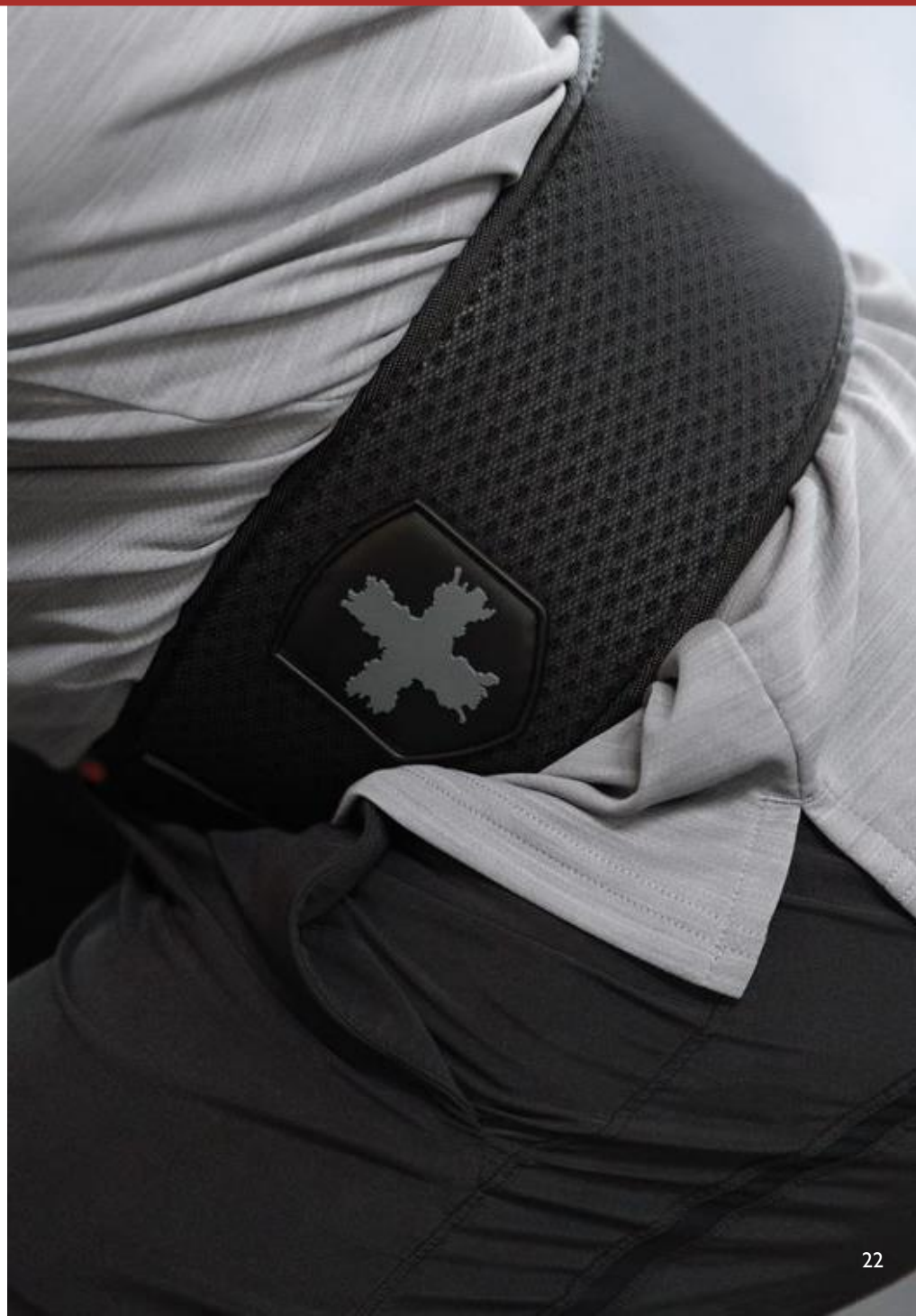
4,5" HEXCORE MESH

Code	Size
22164	XS
22165	S
22166	M



BLACK / BLUE

- breathable support : HexCore material and ventilated backing provide maximum airflow with firm support
- Easy tensioning : heavy gauge steel roller buckle makes tensioning easy for a customized fit
- Competition size : 4,5 inch width meets most competition size requirements





CONTOURED BELTS

Contoured strength training belts are ergonomically designed to fit the natural shape of the body while stabilizing the core muscles. Offered in different widths for comfort and support, contoured belts provide a tailored feel. Adjustable, heavy gauge steel tensioning buckles customize the fit.



7.5" FIRMFIT™ CONTOUR

Code	Size
360500	S
360975	M
360982	L
360999	XL

- 7.5" contoured width for maximum support
- 5 secure foam panels for enhanced protection
- Extra wide 3" strap stabilizes muscles
- Heavy gauge steel buckle tensions easily for a custom fit

BLACK



DIP BELTS

Harbinger dip belts help add weight for exercises like dips and pullups. They are contoured to fit the natural shape of the body and feature a 34" steel chain and clip to secure additional weight.

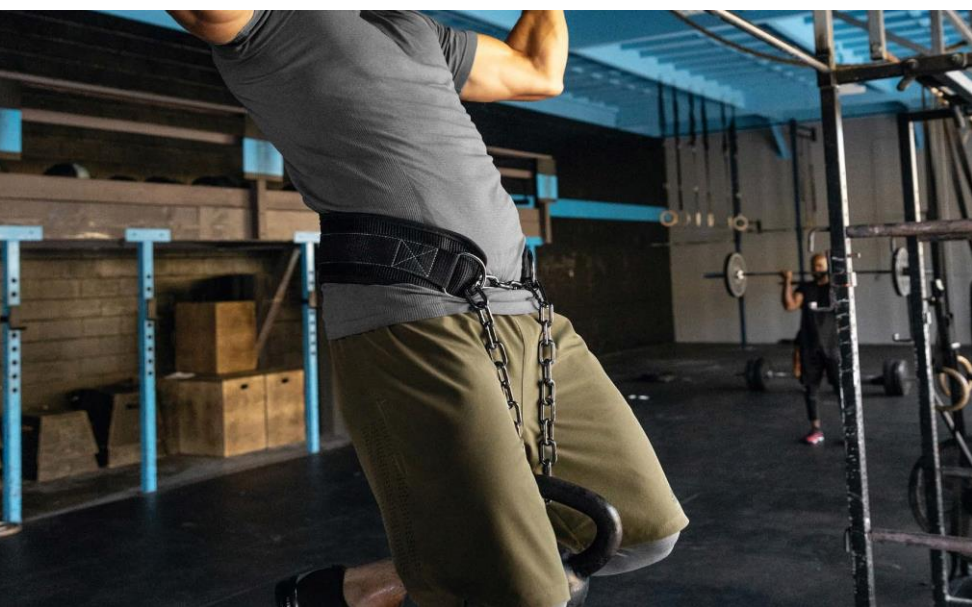


BLACK

POLYPRO DIP BELT

- Constructed of durable polypropylene with heavy duty steel grommets that secure chain to belt
- Contoured belt design rests on back and fits comfortably during serious training
- Features an extended 34" steel chain and carabiner mechanism to easily add weight for chin-ups and dips
- One size fits all

Code	Size
21798	ONE SIZE





PADDED LEATHER BELTS

Harbinger's Padded Leather belts offer enhanced comfort with interior foam cushioning and a suede lining. Backed with split leather for lasting quality.



BLACK

6" PADDED LEATHER BELT

Code	Size
360517	S
361002	M
361019	L
361026	XL
361033	XXL

- 6" wide contoured leather for reliable core support
- Interior foam padding and suede lining for comfort
- Heavy duty dual-pronged steel roller buckle locks belt into position



BLACK

4" PADDED LEATHER BELT

Code	Size
361057	S
361064	M
361071	L
361088	XL

- 4" wide contoured leather for reliable core support
- Interior foam padding and suede lining for comfort
- Heavy duty dual-pronged steel roller buckle locks belt into position



Harbinger

HARBINGER LIFT ASSIST

GRIPS ASSISTANCE
WRIST AND KNEE SUPPORT





LIFTING STRAPS – Straps reduce grip fatigue and can increase max lifts for pulling exercises when grip is the limiting factor.

Style	Cotton Lifting Straps	Padded Cotton Lifting Straps	Big Grip Lifting Straps	Big Grip Pro Lifting Straps	Big grip padded lifting straps	Leather Lifting Straps	Padded Leather Lifting Straps	Lifting Grips
Comparison	Entry Level	Padded wrist improves comfort	Grippy rubber further improves grip	Strap and wrist support combination	Grip and padded	Durable leather construction	Durable leather construction with padding	Palm protection + Quick connect





COTTON STRAPS

Cotton lifting straps offer essential grip support while lifting. Designed with extended lengths and merrowed end tabs to prevent fraying.



BLACK

COTTON LIFTING STRAPS

Code	Size
361170	ONE SIZE

- 20 1/2" full length strap for stronger wrap on bar.
- Extra 1 1/2" width increases contact on grip surface
- Merrowed end tabs prevent fraying
- Heavy duty stitching for enhanced durability



BLACK

PADDED COTTON LIFTING STRAPS

Code	Size
360524	ONE SIZE

- Extended length strap for stronger wrap and grip
- Neotek pad cushions wrist for heavy lifts
- Additional 1.5-inch width increases contact with surfaces and improves grip
- Heavy duty stitching increases durability
- Merrowed end tabs prevent fraying



PINK

Code	Size
361231	ONE SIZE



CAMO

Code	Size
22120	ONE SIZE



BIG GRIP

The patent-pending Big Grip Strap Collection is made of DuraGrip™ rubber interwoven with nylon for superior traction.

BIG GRIP LIFTING STRAPS

Code	Size
361774	ONE SIZE

- Straps have rubber interwoven in heavy duty nylon increasing traction on grip surface
- Merrowed end tabs prevent fraying
- 21 1/2" extended length strap for stronger wrap on bar
- Heavy duty stitching for enhanced durability



BIG GRIP PRO LIFTING STRAPS

Code	Size
360531	ONE SIZE

- Rubber interwoven in heavy duty nylon increases traction on grip surface
- 11 1/2" full length
- NeoTek pads secure the lifting strap in the proper position while providing maximum cushioning during lifting
- Designed for right and left (steel buckle worn on outside of wrist)
- Fully adjustable; one size fits all
- Heavy duty stitching for enhanced durability



BIG GRIP PADDED LIFTING STRAPS

Code	Size
361767	ONE SIZE

- Neotel wrist pad cushions the wrist during heavy lifting
- Straps have rubber interwoven in heavy duty nylon increasing traction on grip surface
- 21 1/2" extended length strap for stronger wrap on bar
- Heavy duty stitching for enhanced durability





LEATHER STRAPS

Specially-tanned real leather provides the closest grip for heavy lifts. Leather straps comfortably conform under the hand and around bar. Tri-layer design and durable construction prevents tearing.

LEATHER LIFTING STRAPS

Code	Size
361781	ONE SIZE

- Specially tanned real leather offers strong traction on bar with no added bulk
- Tri-layer design maintains shape while heavy duty construction prevents tearing
- Extended 21" length and full 1 1/2" width strap for stronger wrap and grip
- Comfortably conforms under hand and around bar, with no added bulk
- Merrowed end tabs prevent fraying



BLACK



PADDED LEATHER STRAPS

Specially-tanned real leather provides the closest grip for heavy lifts. Leather straps comfortably conform under the hand and around bar in padded version.

LEATHER LIFTING STRAPS

Code	Size
20707 (US) 22476 (EU)	ONE SIZE

- Specially tanned real leather offers strong traction on bar with no added bulk
- Tri-layer design maintains shape while heavy duty construction prevents tearing
- Extended 21" length and full 1 1/2" width strap for stronger wrap and grip
- Comfortably conforms under hand and around bar, with no added bulk
- NeoTek pad cushions wrist for heavy lifts
- Merrowed end tabs prevent fraying



RED





LIFT ASSISTS

Lift assists round out the strength training collection to serve more specific training needs. They provide palm and wrist joint protection and extra assistance when needed. All are fully adjustable and sized for best coverage.



LIFTING GRIPS

Code	Size
361347	S/M
361354	M/L
361361	L/XL

- SpiderGrip™ leather palm protector with adjustable NeoTek™ cushioned lifting strap
- Bioform™ clay forms to the bar and secures grip
- Sized for best fit, grip coverage, and full finger range of motion width strap



BLACK





WRIST WRAPS — Wrist wraps support the wrist by acting as a brace to prevent excessive movement and are particularly useful during pressing exercises.

Style	Pro Wristwrap	Red Line Wrist Wrap	Wrist Supports
Comparison	More flex, less support	More support with competition grade elastic	Most support



KNEE SUPPORT — Knee sleeves and wraps support the knees while providing compression and padding.

		Power Knee Wraps	Power Knee Wraps
Comparison	Protection and joint support	More flex, less support	More flex, less support





PRO LIFTING WRISTWRAPS

Medium weight elastic properly stabilizes the wrist and knee joints while supporting all lifting movements. Extended lengths for essential support and secure wrapping. One size fits all.



PRO THUMB LOOP WRISTWRAPS

- Extended 20" length
- Thumb loop secures wrap on hand

BLACK



Code	Size
361187	ONE SIZE

RED LINE WRISTWRAPS

Made of competition grade elastic to maximize wrist and knee joint stability, Harbinger wraps support key movements. Extended lengths for fully adjustable support.

RED LINE WRISTWRAP

- Distinctive red line competition grade elastic maximizes wrist stability and support
- Extended 18" length for strong support and wrist stability
- Thumb loop secures wrap on hand
- Fully adjustable closure



CAMO

Code	Size
22121	ONE SIZE



BLACK / RED

Code	Size
360548	ONE SIZE



GREY CAMO

Code	Size
22225	ONE SIZE

WRIST SUPPORTS

- Non-stretch design stabilizes and supports wrist, while maintaining proper wrist position
- Extra wide 2" stabilizing strap with 6 mm neoprene wrist cuff
- Steel tensioning buckle customizes fit

BLACK



Code	Size
20678	ONE SIZE





5MM KNEE SLEEVE

- 5mm knee sleeves provide protection and joint support during heavy lifting and contact movements.
- 5mm knee sleeves provide protection and joint support
- Cushions the knee during lunges and other contact movements
- Adds lower quad compression for performance and recovery benefits
- Keeps the knee joint warm between exercises for optimal performance
- Snug but comfortable fit stays in place during workouts

BLACK

Code	Size
22283	S
22284	M
22285	L
22286	XL





RED LINE KNEE WRAPS

- Distinctive red line competition grade elastic maximizes knee stability and support
- Extended 78" length provides full spectrum tension in wrapping and knee positioning
- 3" wide competition grade elastic provides maximum support
- Helps to preserve and protect the knee joints for bodybuilders, weightlifters, and fitness enthusiasts
- Fully adjustable



Code	Size
361194	ONE SIZE

BLACK / RED



Code	Size
22122	ONE SIZE

CAMO



**HARBINGER TRAINING
ACCESSORIES**

Targeted Additions





EQUIPMENT ACCESSORIES

Harbinger equipment accessories are compatible with universal cable machines and barbell equipment. Adjustable closures and durable design.



BLACK

3" HEAVY DUTY ANKLE CUFF

Code	Size
361040	ONE SIZE

Compatible with universal cable machines
Heavy duty steel D rings clip onto universal gym cables
Synthetic shearling pad lining enhances comfort and protects ankle
Adjustable closure, one size fits all



BLACK



2" PADDED ANKLE CUFF

Code	Size
361750	ONE SIZE

Compatible with universal cable machines.
Plush neoprene padding protects and cushions ankle
Heavy duty steel D ring clips on to a universal gym cable



BLACK

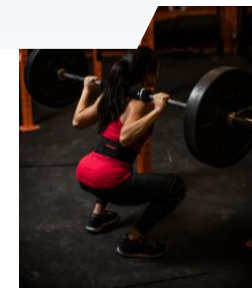
NYLON HEAD HARNESS

Code	Size
361590	ONE SIZE

- Heavy duty Cordura nylon construction
- 30" steel chain with clip
- Synthetic shearling pad lining enhances comfort
- Fully adjustable sizing



BLACK



BAR PAD

Code	Size
361620	14"

- 15mm NeoTek™ foam core cushions neck and shoulders
- Sueded ComfortTech™ cover is smooth and easy to clean
- Fits Standard and Olympic bars



BLACK

OLYMPIC BAR PAD

Code	Size
361118	16"

- 15mm NeoTek™ foam core cushions neck and shoulders
- Sueded ComfortTech™ cover is smooth and easy to clean
- Fits Standard and Olympic bars



GRIP STRENGTHENING

Made of competition grade elastic to maximize wrist and knee joint stability, Harbinger wraps support key movements. Extended lengths for fully adjustable support.

POWER HAND GRIP

Code	Size
361392	ONE SIZE

- Engineered resistance mechanism for consistent tension and durability
- Ergonomic design keeps hand in proper position
- Dual-colored non-slip grip

BLACK / BLUE



TRICEP ROPE 26"

Code	Size
361415	26"

- Premium nylon woven ropes
- Custom engineered over-molded grips
- Die cast aluminum receivers attach to universal cables



BLACK / RED

MATS

Harbinger mats are cushioned with a non-slip ribbed surface for optimal training and recovery.

ANTIMICROBIAL DURAFOAM MAT 3/8"



Code	Size
361675	72"x 23"

- Antimicrobial treated
- Closed cell Durafoam™ moisture resistant surface
- Integrated strap for transport



BLACK

ANTIMICROBIAL DURAFOAM MAT 5/8"




Code	Size
361408	72"x 23"

- Antimicrobial treated
- Closed cell Durafoam™ moisture resistant surface
- Integrated strap for transport



BLUE





HARBINGER

HOME FITNESS





HOME FITNESS ESSENTIALS

MULTI GYM PRO

Increases muscle strength in arms, chest, shoulders, abs. No installation necessary. Adjustable depth in order to attach to door frames from 27" to 35" wide.

Item#
21313



PUSH UP PRO

Patented smooth rotation increases muscle activation and maximises results. Increases muscle strength and definition in arms, shoulders, chest, back and abs. Reduces joint strain in wrists and elbow through natural body movement. Supports user weight up to 400lbs. Ball bearing rotation system.

Item# 21314



AB CARVER PRO

Carve core and help get ripped abs and sculpted arms. Kinetic « engine » uses a carbon steel spring to turbocharge abdominal and arm workouts. Provides resistance rolling out and assistance rolling back. Non-bulky design, easy for travelling. User weight limit 300lbs/136kg.

Item#
21312



AB CARVER SPORT

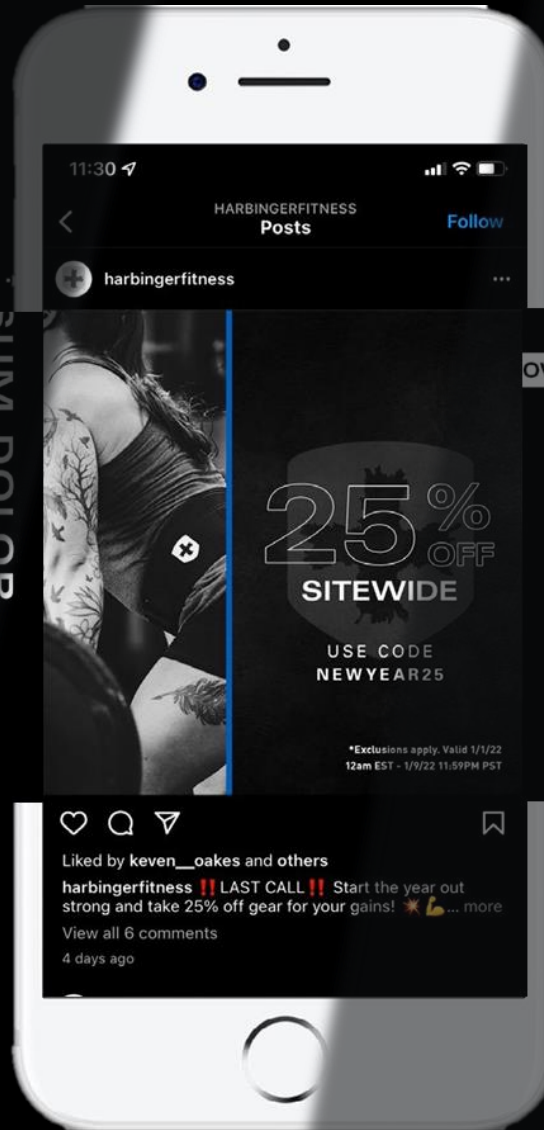
Extra wide wheel to ensure stability allowing you to carve left, right and center
Ergonomic angled handles help increase arm activation and shoulder stability
Rugged gym quality construction and non-slip rubber wheel tread
Designed for all fitness levels

Item#
22300



HARBINGER BRAND SUPPORT

Campaigns. Digital. Retail.
Social.





APRIL-MAY



Summer Shred

Objective

Get in shape for the season

Product

Padded Cotton Lifting Straps, Pro WW Gloves, Padded Leather Belt, Foam Core Belt, Power Glove, Red Line Wrist Wraps, Red Line Knee Wraps, Pro Glove, Big Grip Pro Straps,

JULY



Home Ex Summer

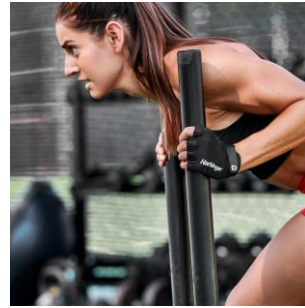
Objective

Workout on the go or at home

Product

Home fitness

AUGUST



FA23 Launch

Objective

New Fall 23 products

Product

FA23

OCT-DECEMBER



Holiday

Objective

Gifts for the lifter in your life

Product

Padded Cotton Lifting Straps, Pro WW Gloves, Padded Leather Belt, Foam Core Belt, Red Line Wrist Wraps, Red Line Knee Wraps, Pro Glove, Big Grip Pro Straps, PP Dip Belt, Lifting Grips

JANUARY



New Year, New You

Objective

New year, new you

Product

Power Glove, Foam Core Belt, Red Line Wrist Wraps, Padded Cotton Lifting Straps, Flexfit Gloves Knee Sleeves, Power Grip



SUPPORT

A variety of medias and asset to best promote product locally.

Close up Visual



Lifestyle Pictures



Features bullets e-com

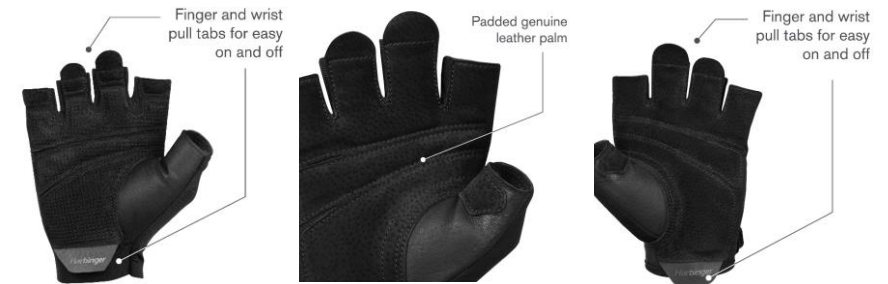


Multi-piece palm designed to allow natural hand movement

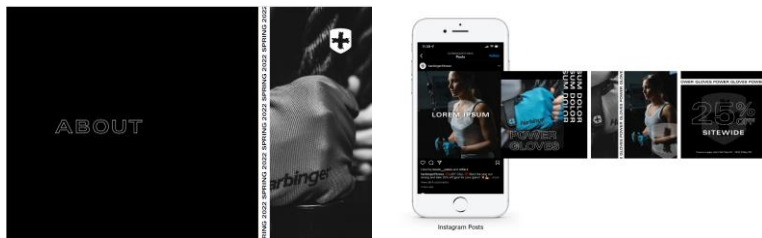
Designed for easy on and off with integrated finger and wrist pull tabs

- Maximum hand protection provided by TechGel™ padded palm
- Comfortable 4-way stretch fabric on back of hand for full range of motion

Technical highlights



Visual center & Marketing Campaign for local creations

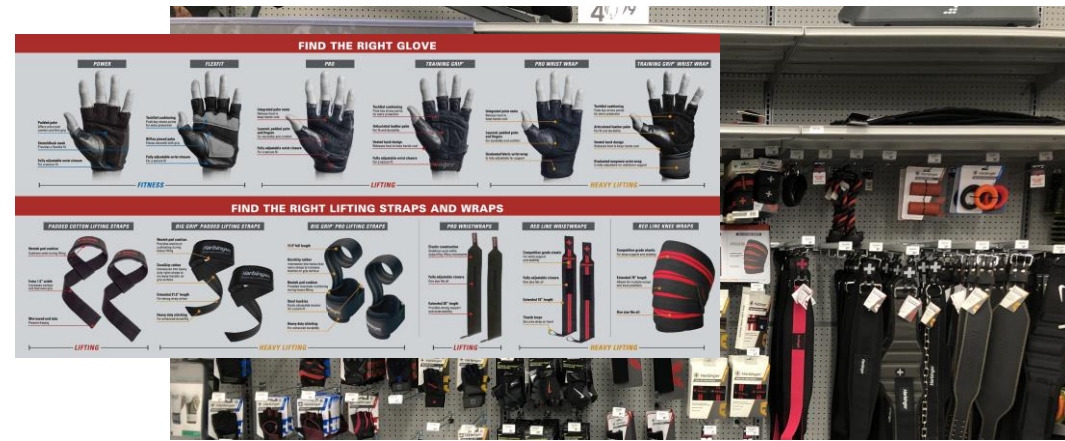
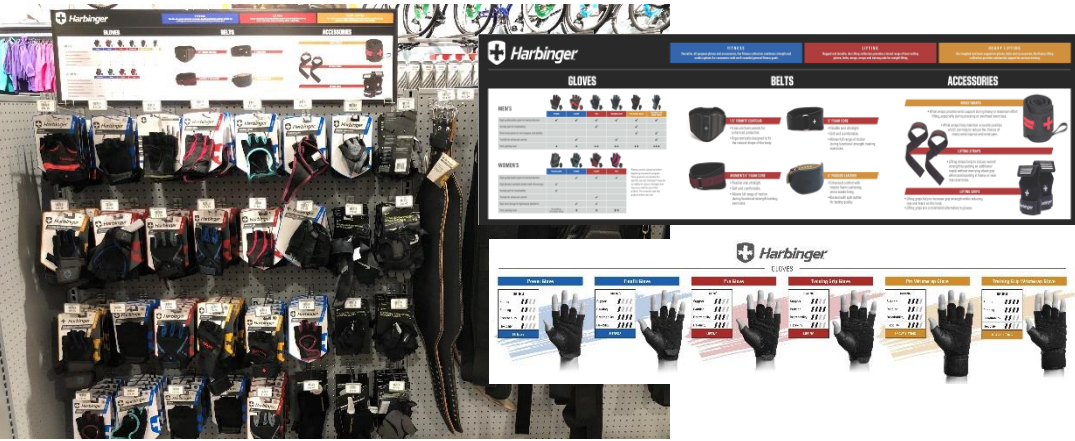


More than 20 new videos





VISUAL MERCHANDISING



RETAIL LOOKS

VISUAL MERCHANDISING

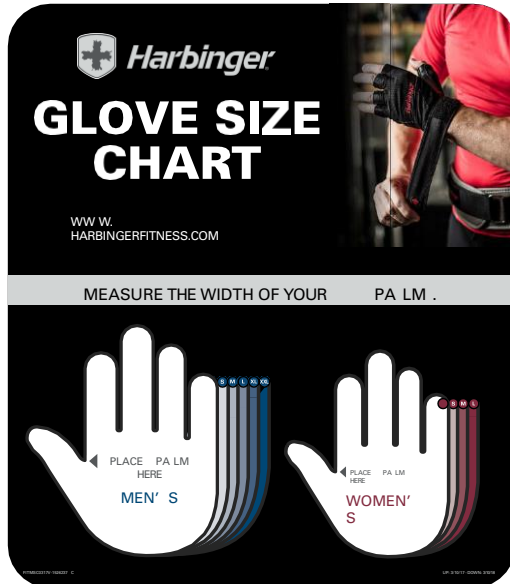
A variety of retail signage is available.



Header Card



H-Rack Sign



Glove Sizer Tablet

Harbinger

GLOVES
BELTS
STRENGTH ACCESSORIES



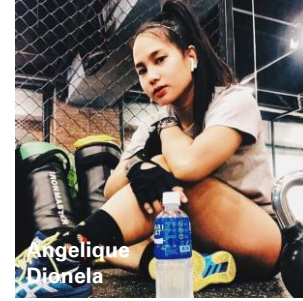
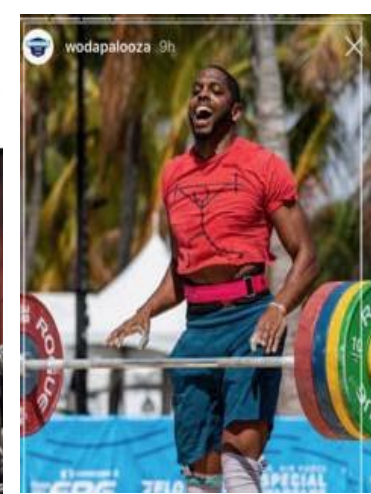
HarbingerFitness.com

Blade Sign

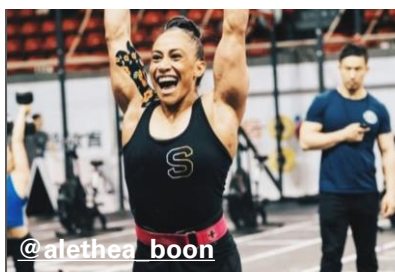
ALL EYES ON HARBINGER



Will Smith
@vsgalang



38,063 likes
harbingerfitness A very special #FlexFriday screenshot from @muscle_and_fitness -- Dwayne @therock Johnson ROCKING our wrist wraps!!



@alethea boon



Harbinger[®]
ELEVATING STRENGTH

IMPLUS EU

6 AVENUE DU VAL, 78520 LIMAY -
FRANCE

+33 (0) 1 79 98 10 17

welcome@implus-eu.com

IMPLUS ASIA

Janice LEE: Sales Manager

j.lee@4implus.com